

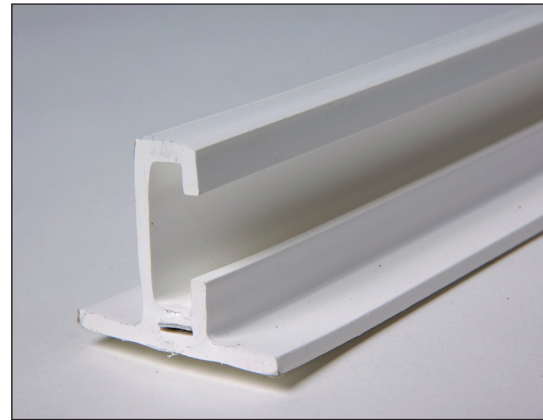
## Features and Components

**Use:** Used as a decorative rib to simulate the aesthetics of a standing seam metal roof. This accessory is for use on fully adhered JM PVC and JM PVC SD Plus roofing systems with 60 mil or greater membranes.

**Materials:** UV-resistant PVC (polyvinyl chloride) and an Elvaloy®\* KEE (ketone ethylene ester). Preformed, non-reinforced, extruded, and heat-weldable.

**Colors:** White; Sandstone; and Grey

\* Elvaloy is a registered trademark of Dow.



Component

**A**  
Accessory

Single Ply

Type

**MS**  
Membrane Seaming

**System Compatibility** This product may be used as a component in the following systems. Please reference product application for specific installation methods and information.

Multi-Ply	BUR		APP		SBS				
	HA	CA	CA	HW	HA	CA	HW	SA	MF
<i>Do not use in Multi-Ply systems</i>									

Single Ply	TPO		PVC		EPDM		
	MF	FA	MF	FA	MF	FA	BA
<i>Compatible with the selected Single Ply systems above</i>							

**Key:** HA = Hot Applied CA = Cold Applied HW = Heat Weldable SA = Self Adhered MF = Mechanically Fastened FA = Fully Adhered BA = Ballasted

## Peak Advantage® Guarantee Information

Systems
Approved for use in any JM Peak Advantage Guarantee System

## Installation/Application



Hot Air Weld

- Do not install in direct contact with asphalt or coal tar pitch.
- Refer to the JM PVC applicator guides or detail drawings for instructions.

## Packaging and Dimensions

Profile Size	1½" w x 1¼" h x 10' (38 mm x 32 mm x 3.05 m)
Profile Weight	2.94 lb (1.33 kg) per rib
Spine Size	¼" w x 1⅜" h x 7' (6.35 mm x 21 mm x 2.13 m) perforated every 6" (15.24 cm)
Items per Box	24 – 10' (3.05 m) Profiles and one (1) piece of 7' (2.13 m) connector perforated every 6" (15.24 cm) Profile Spine (connector) – 14 per box
Coverage per Box	240 lin ft (73.2 lin m)
Weight per Box	80 lb (36.3 kg)

## Spine Only Box

Spine Size	¼" w x 1⅜" h x 6' l (6.35 mm x 21 mm x 2.13 m)
Spine Weight	0.04 lb (0.02 kg)
Items per Box	24 - 6" Spines
Weight per Box	2.5 lb (1.13 kg)

## Storage

Storage Conditions	Keep dry and clean prior to installation. Store flat, not on end, protected from warping, bending or contamination.
--------------------	---